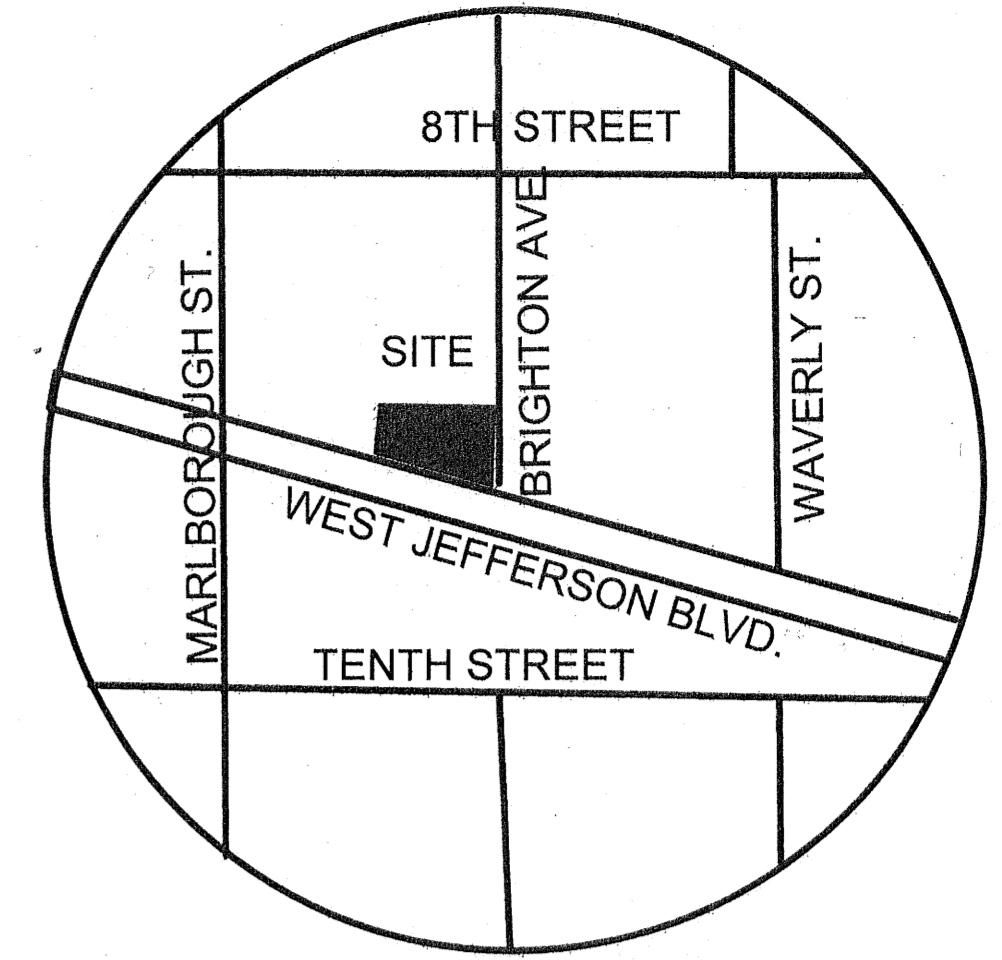


SITE INFORMATION	
COUNCIL DISTRICT	1
EXISTING ZONING	
SCHOOL DISTRICT	16
ZONING MAP NO.	L-6
MAPSCO NO.	54 E
CENSUS TRACT	0046.00

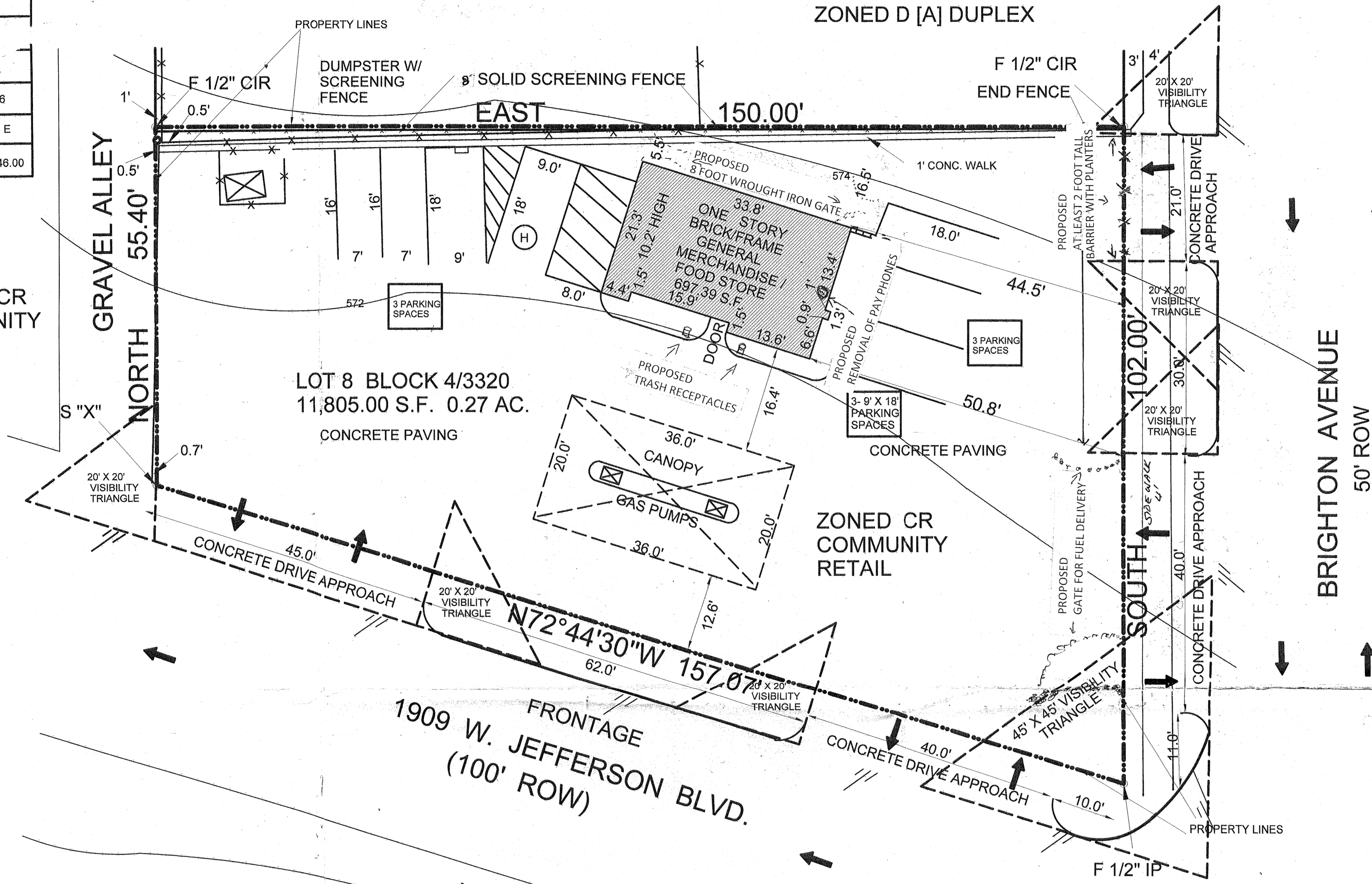
LOT 9

ZONED D [A] DUPLEX



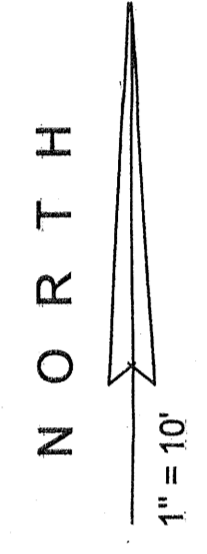
REVISIONS	
REVISED	11-26-2012
REVISED	9-22-2013

ZONED CR COMMUNITY RETAIL



LOT 8, BLOCK 4/ 3320 OF ROSEMONT CREST ADDITION, AN ADDITION TO THE CITY OF DALLAS, DALLAS COUNTY, TEXAS ACCORDING TO THE PLAT RECORDED IN VOLUME 1, PAGE 457, MAP RECORDS OF DALLAS COUNTY, TEXAS.

NOTES: NO BUILDING LINES OR EASEMENTS ON PLAT OR LOCATED OF RECORD.
BASIS OF BEARINGS = VOLUME 1, PAGE 457



LEGEND

- 1/2" IR = 1/2" IRON ROD FOUND
- 1/2" RS = 1/2" IRON ROD SET
- X FND = X CUT IN CONCRETE FOUND
- HMF = HIGHWAY MONUMENT FOUND
- RRSP = RAILROAD SPIKE FOUND
- P O B = POINT OF BEGINNING
- P O C = POINT OF COMMENCING
- ESMT = EASEMENT
- UGE = UNDERGROUND ELECTRIC SERVICE
- OHE = OVERHEAD ELECTRIC SERVICE
- ET = ELECTRIC TRANSFORMER
- FH = FIRE HYDRANT
- WV = WATER VALVE
- WM = WATER METER
- PP = POWER POLE
- PPG = POWER POLE & GUY ANCHOR
- LP = LIGHT POLE
- SP = SIGN POLE
- SSMH = SANITARY SEWER MANHOLE
- SSCO = SANITARY SEWER CLEANOUT
- SDMH = STORM DRAIN MANHOLE
- ELMH = ELECTRICAL MANHOLE
- PS = PARKING SPACE
- H = HANDICAPPED PARKING SPACE
- TB = TRAFFIC BOX
- TL = TRAFFIC LIGHT
- TMH = TELEPHONE MANHOLE
- CW = CONCRETE WALK
- TR = TELEPHONE RISER
- GM = GAS METER
- CB = CABLE BOX
- X- = FENCE

IMPERVIOUS AREA	
BUILDING FOOTPRINT	697.39 S.F.
CONCRETE FLATWORK	10905.11 S.F.
TOTAL	11602.50 S.F.

PARKING AND ZONING TABULATIONS		
EXISTING ZONING	CR D	
PARKING	REQUIRED	PROVIDED
REGULAR PARKING SPACES	5	6
HANDICAPPED SPACES		1
TOTAL	6	7

SITE PLAN
U STOP FINA
1909 W. JEFFERSON BLVD.

Specific Use Permit
No. 2066
Site Plan

Approved
City Plan Commission
November 21, 2013

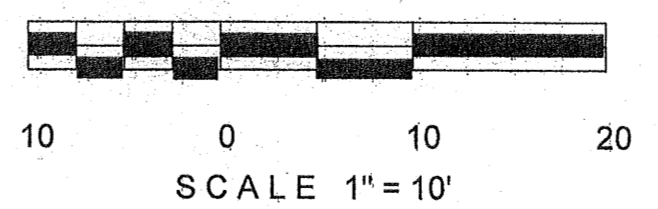
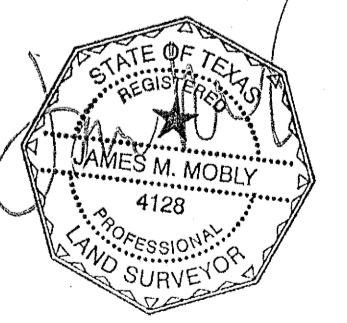
141253

APPROVED BY
CITY COUNCIL
AUG 13 2014
James M. Mobly
City Secretary

29397
29396

BUSINESS ZOOM

1901 CENTRAL DRIVE SUITE 607
BEDFORD, TEXAS 76021 972-591-3322
REPRESENTATIVE: PARVEZ MALIK B.S., B.A.
TEXAS REAL ESTATE LICENSED



MOBLY LAND SURVEYING, INC.
740 DALWORTH STREET
GRAND PRAIRIE, TEXAS 75050 972-262-1300

Z156-240

1909 WEST JEFFERSON BLVD.